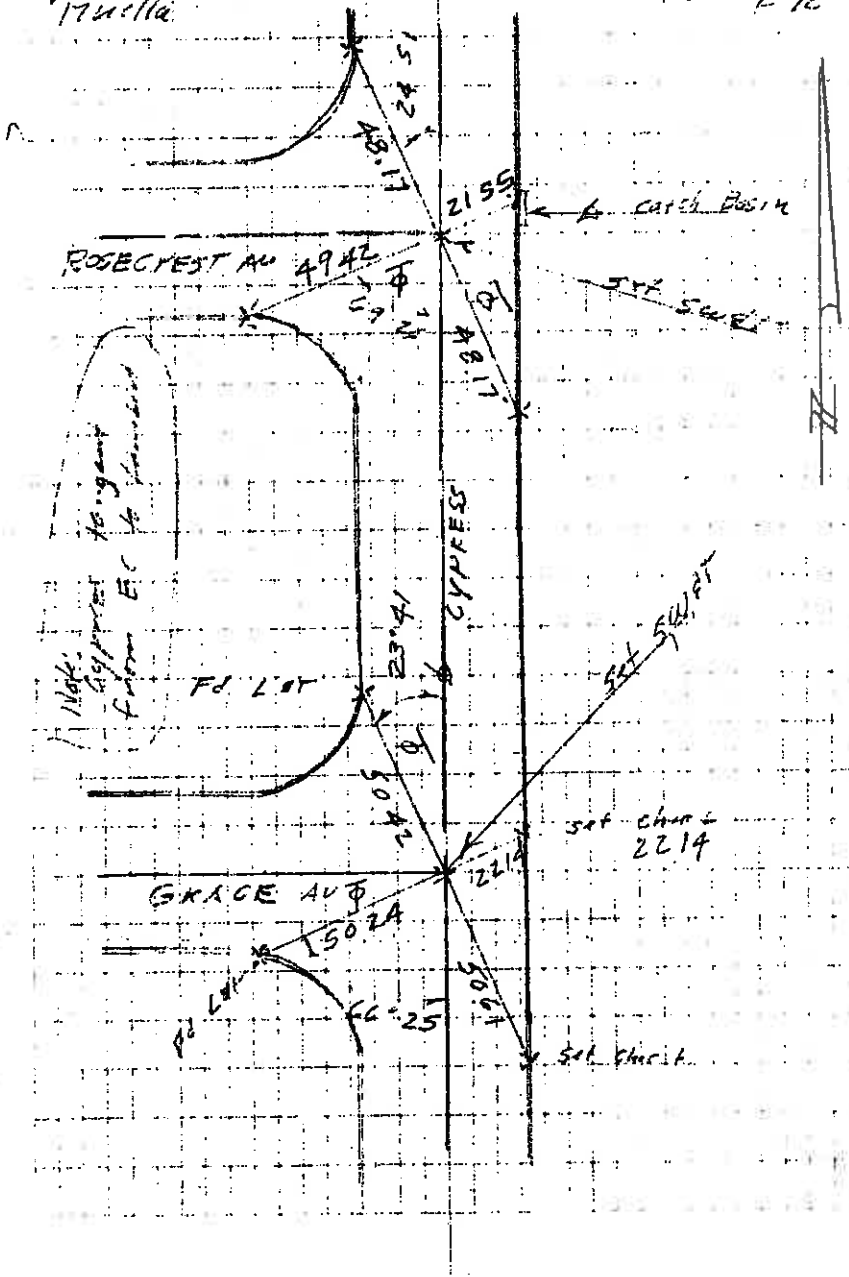


Job 3335
FINAL TIES

Halves
Tucilla

March 29 1972
Clear FTL

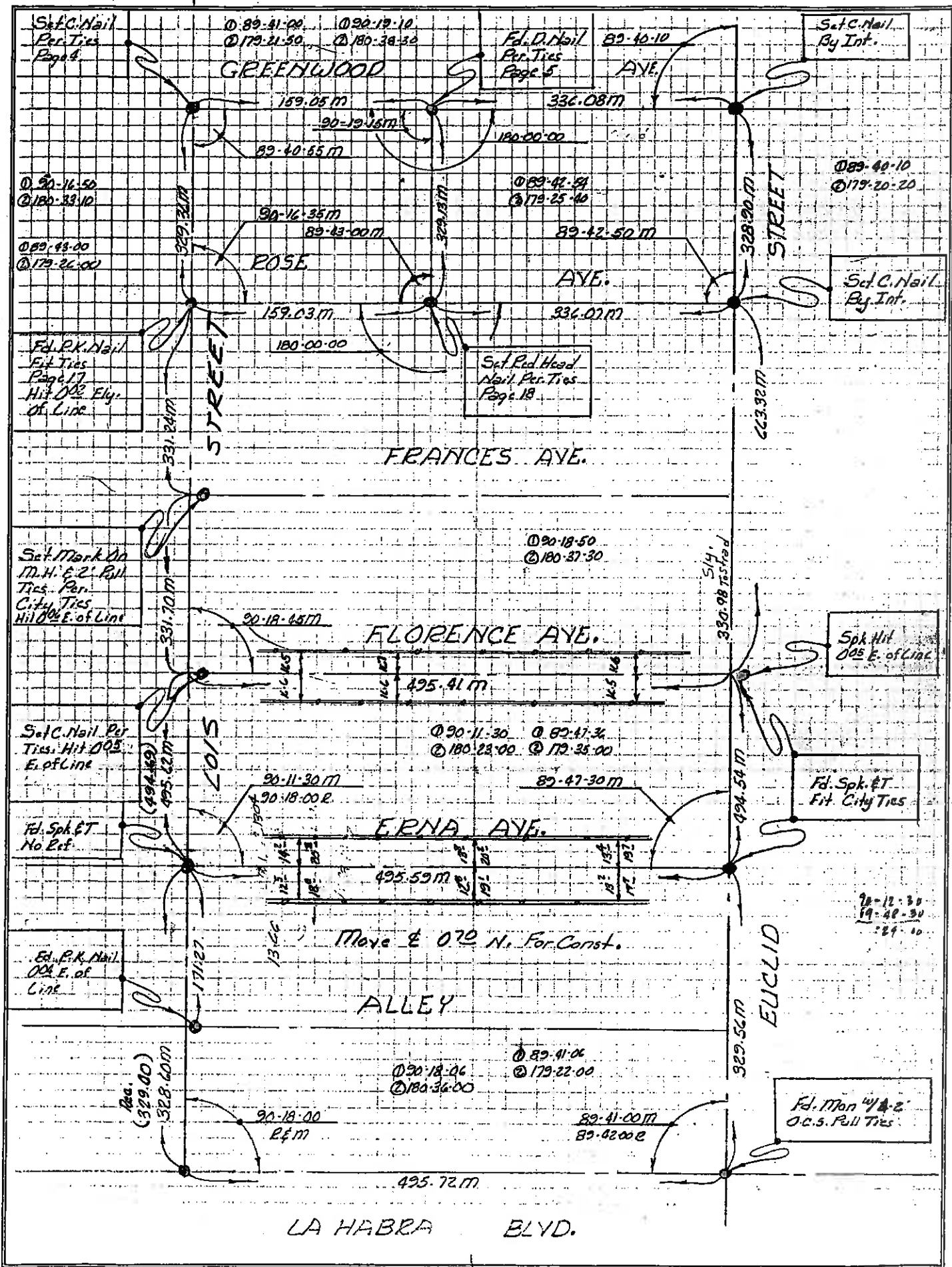


WEACCO, INC.

CONSULTING ENGINEERS AND LAND SURVEYORS

SURVEY BY K. K. K. DATE 5-5-78

CHECKED BY _____ DATE _____



Dec 11, 1968
Cldy F=58

Halverson
Ellison

Job # 3004

Lambert

set pt at
5' 10" W of
169.76

set pt at
5' 10" W of
169.76

set pt at
5' 10" W of
169.76

EUCLID ST

16601

16592

158.56

Los Lomas

Job 3004
Chaining Check

Halverson
Ellison

Los Lomas

set pt at
5' 10" W of
330.01

set pt at
5' 10" W of
330.01

Foundation

set pt at
5' 10" W of
440.05

KEENE

set pt at
5' 10" W of
121.91

INDUSTRY

set pt at
5' 10" W of
230.09

set pt at
5' 10" W of
199.98

199.98

TRIPLEX
Highway

set pt at
5' 10" W of
2.00

(19.9m)
K Rd
set pt

Reoccurist

St Grace

FE PLANT

set pt at
5' 10" W of
16592

FE PLANT

set pt at
5' 10" W of
158.56

Job 3084
& Ties

FD. 81.5M
pot

169.72
EULLIO
STREET

517 211
03 5.24 BCR

57 50

54
241

37 52

525

54 51.5
54 3.7

70

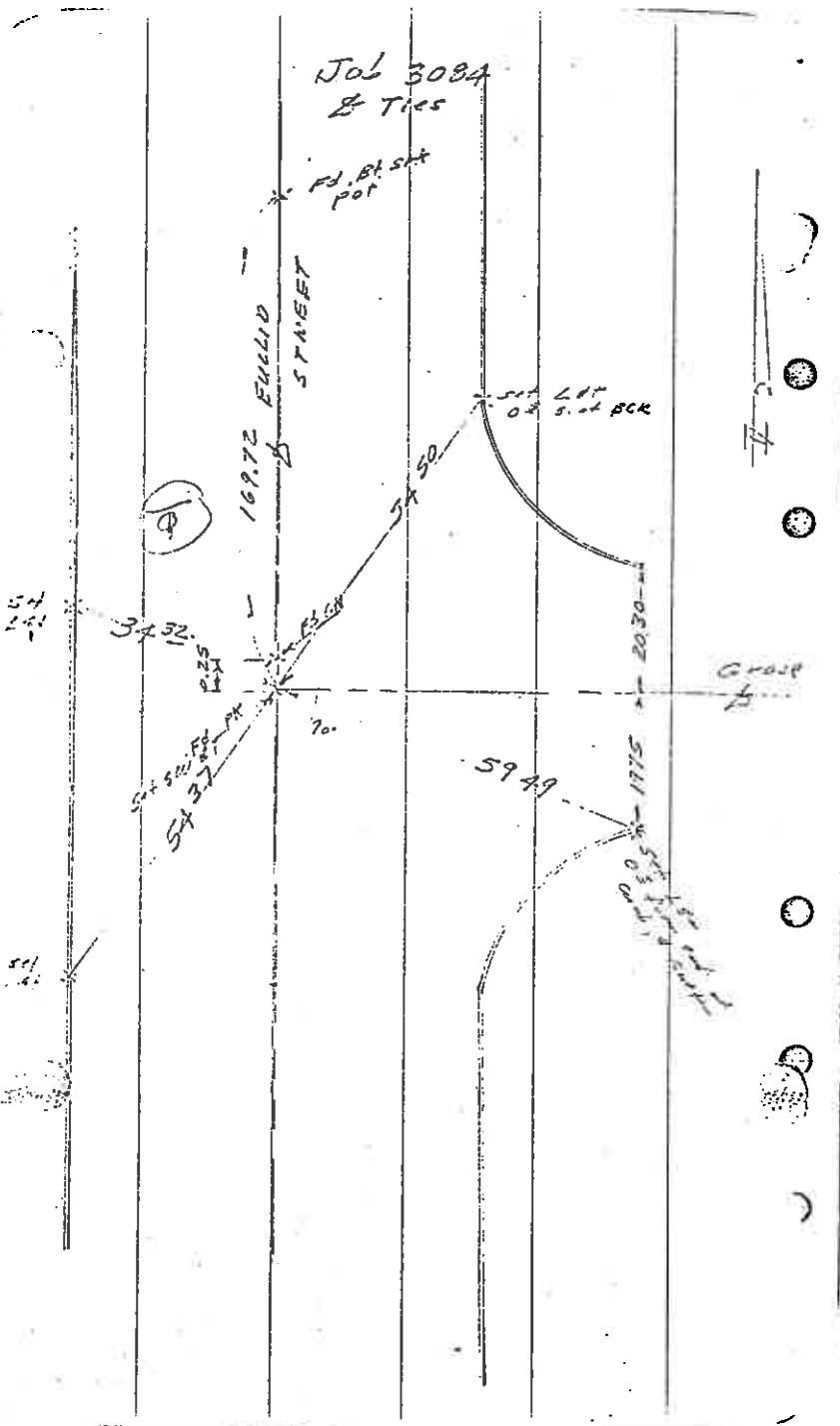
GROUP
A

59 49

1775

517 211
03 5.24 BCR

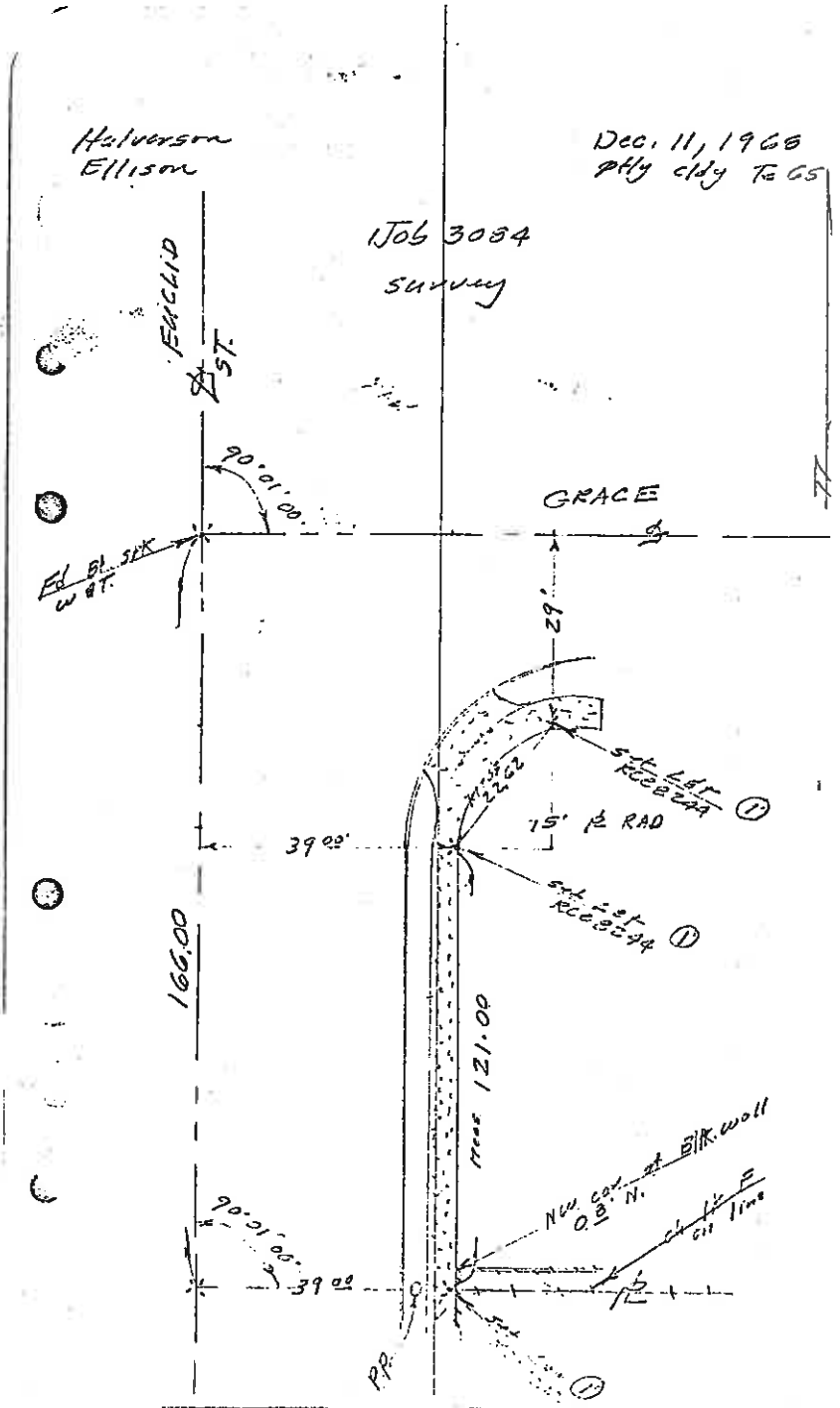
54
241



Halverson
Ellison

Dec. 11, 1968
Ply cldy to GS

Job 3084
Survey



SURVEY OF GRANADA DR. @ GRANADA CT. B. _____ Pg. _____

SURVEY BY ROBERT WADA & ASSOC. TR. No. _____

DATE 7-18-88 JUN 17 22

SO. CALIF. BLUE PRINT CO. -

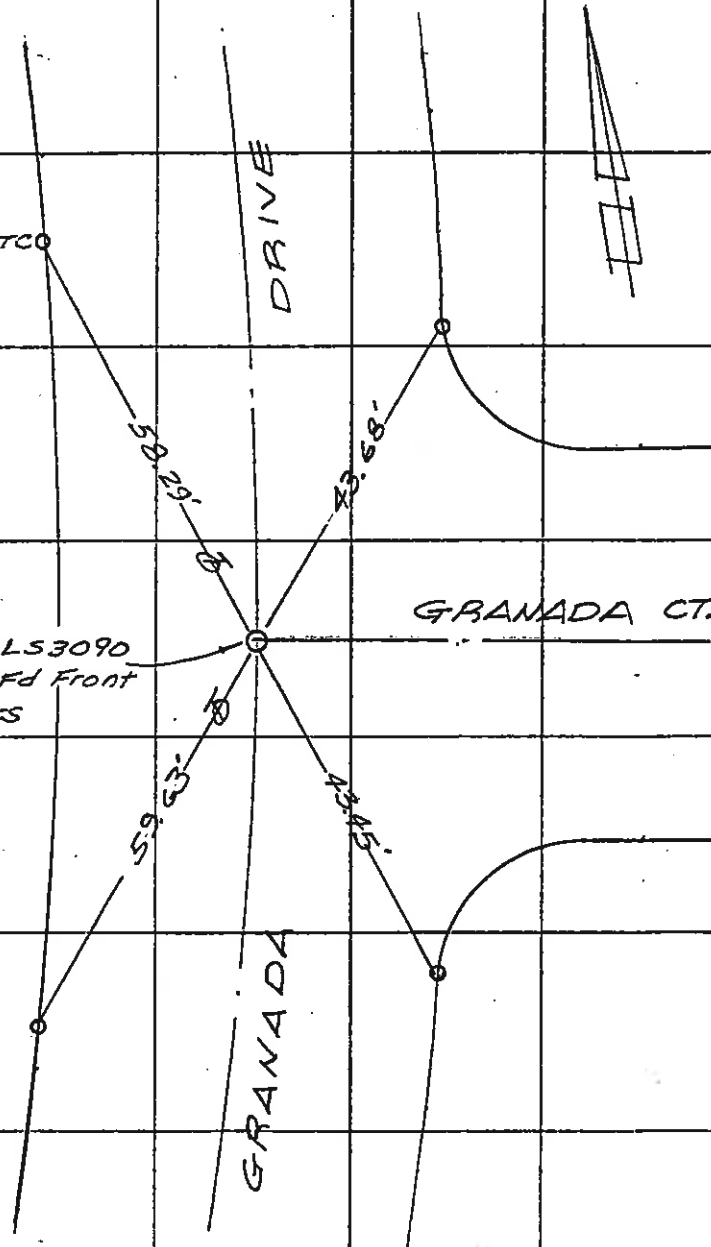
set L47 on TC
(typical)

DRIVE

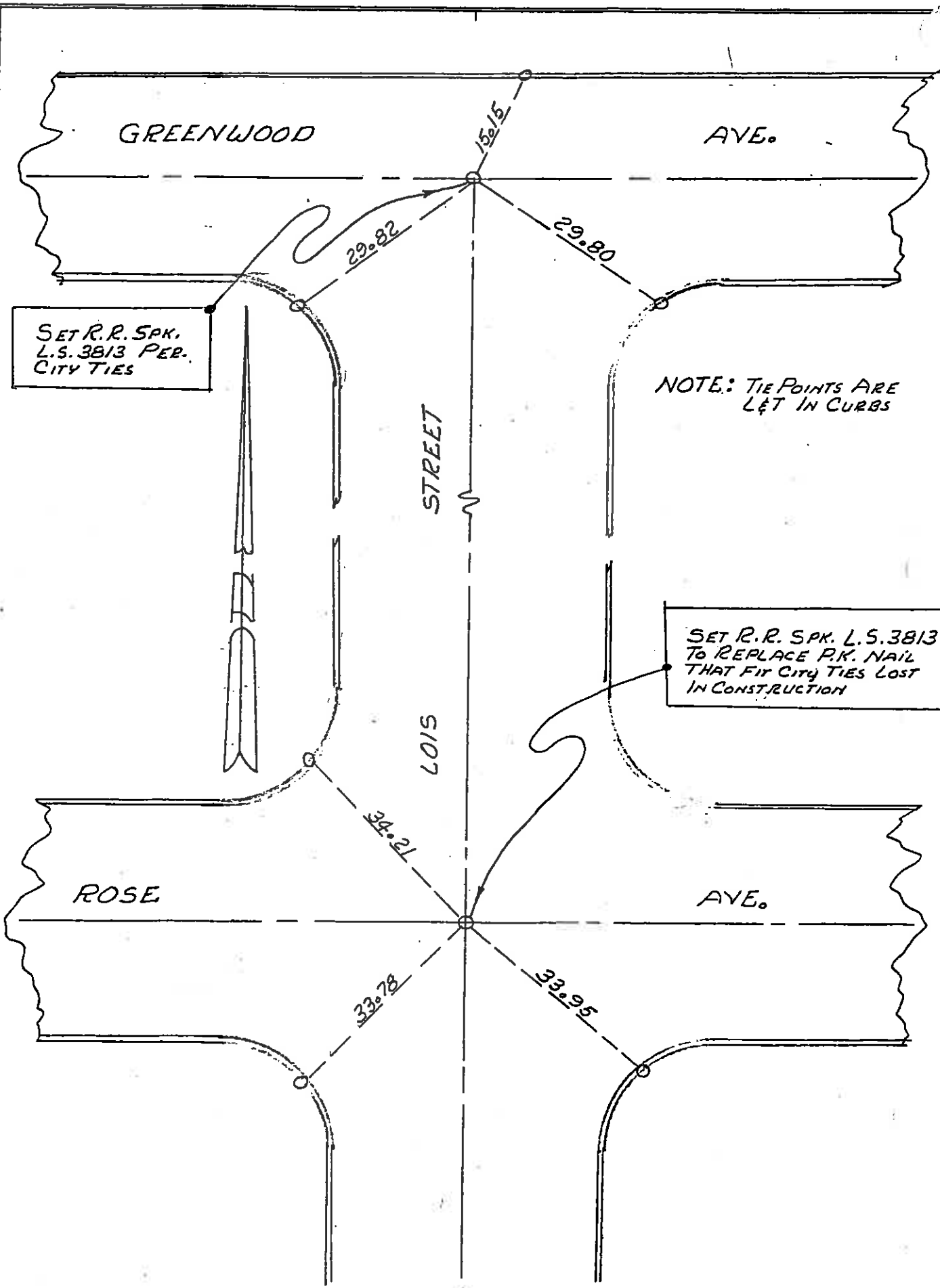
GRANADA CT.

set B+SW, LS3090
Estab. From Fd Front
Lot corners

GRANADA



WEACCO, INC.
CONSULTING ENGINEERS AND LAND SURVEYORS



SURVEY BY KELSOE DATE 9-12-78
CHECKED BY _____ DATE _____

