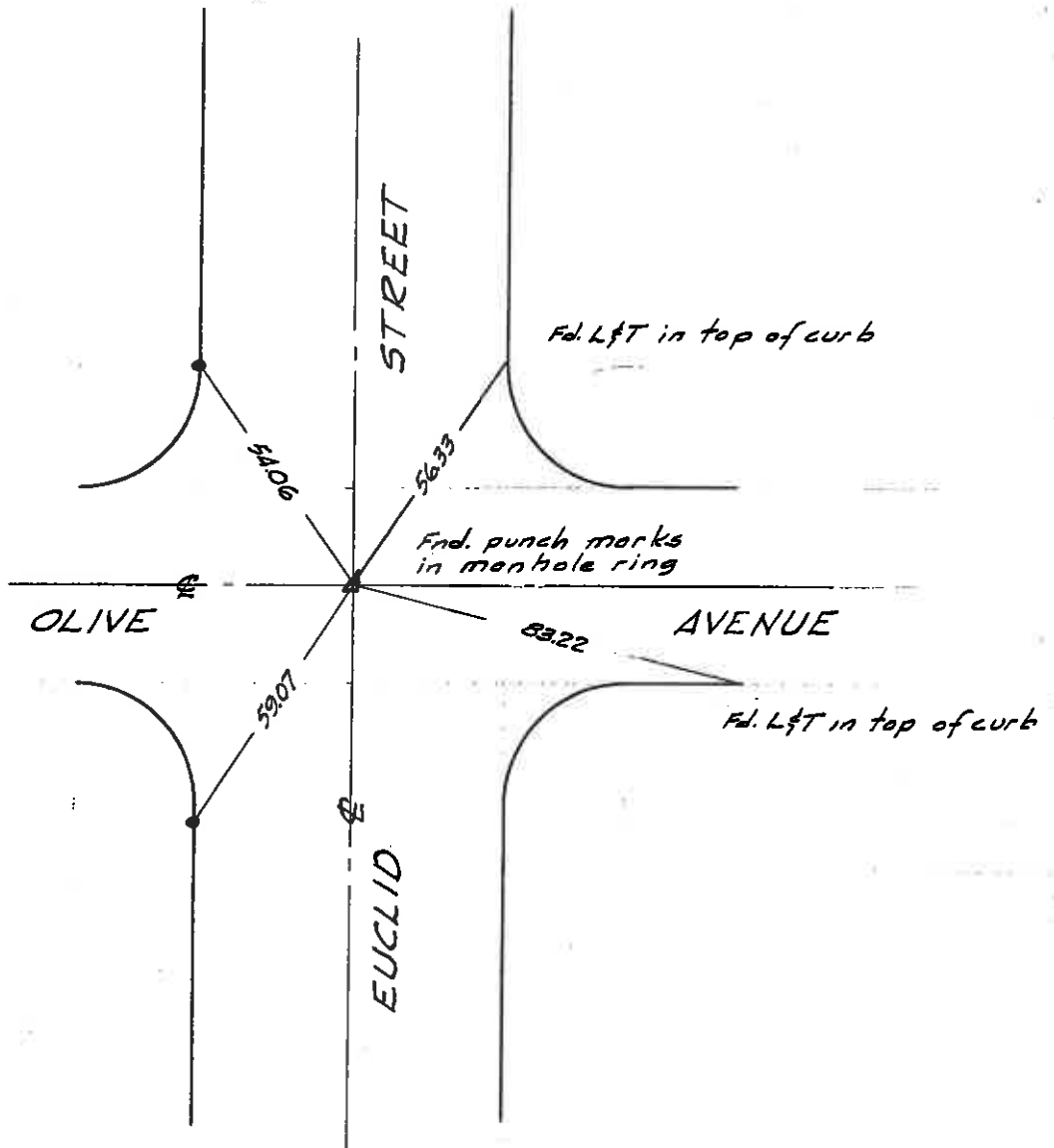


Electric Avenue  
pg 4

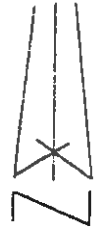
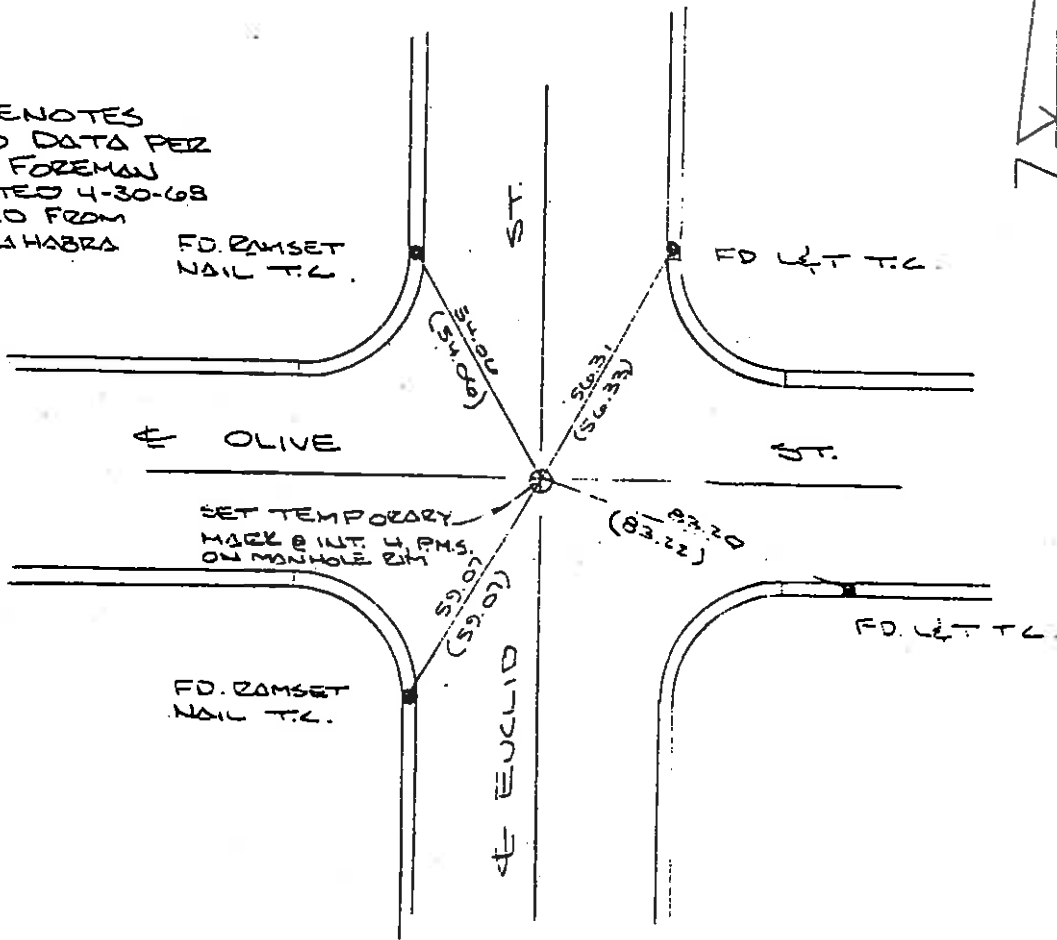


Mountain View  
Avenue  
pg 2

C 7 DENOTES  
RECORD DATA PER  
HALL & FOREMAN  
TIES DATED 4-30-68  
OBTAINED FROM  
CITY OF LA HABRA

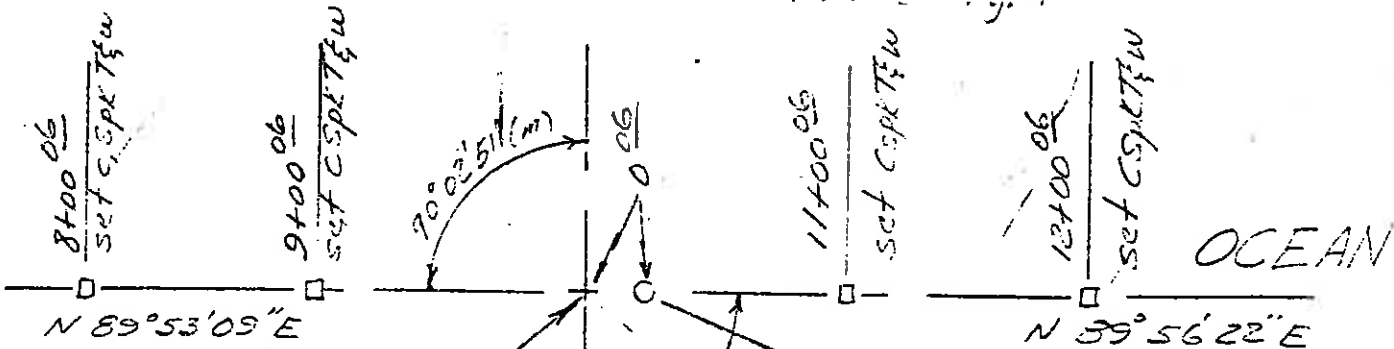
FD. RAMSET  
NAIL T.L.

FD. L&T T.L.



See bottom of Pg. 4

56448 MAR 29, 29



66+68<sup>03</sup> FUL. Rd =  
 10' x 100' Ocean  
 Fd Nothing  
 reset nothing

FULLerton Rd

N 0° 04' 00" W

61+82<sup>42</sup> P.O.T

Fd L & T 0<sup>30</sup> DP  
 reset Sg Hd, T, & W on surface

56+91<sup>19</sup> P.O.T

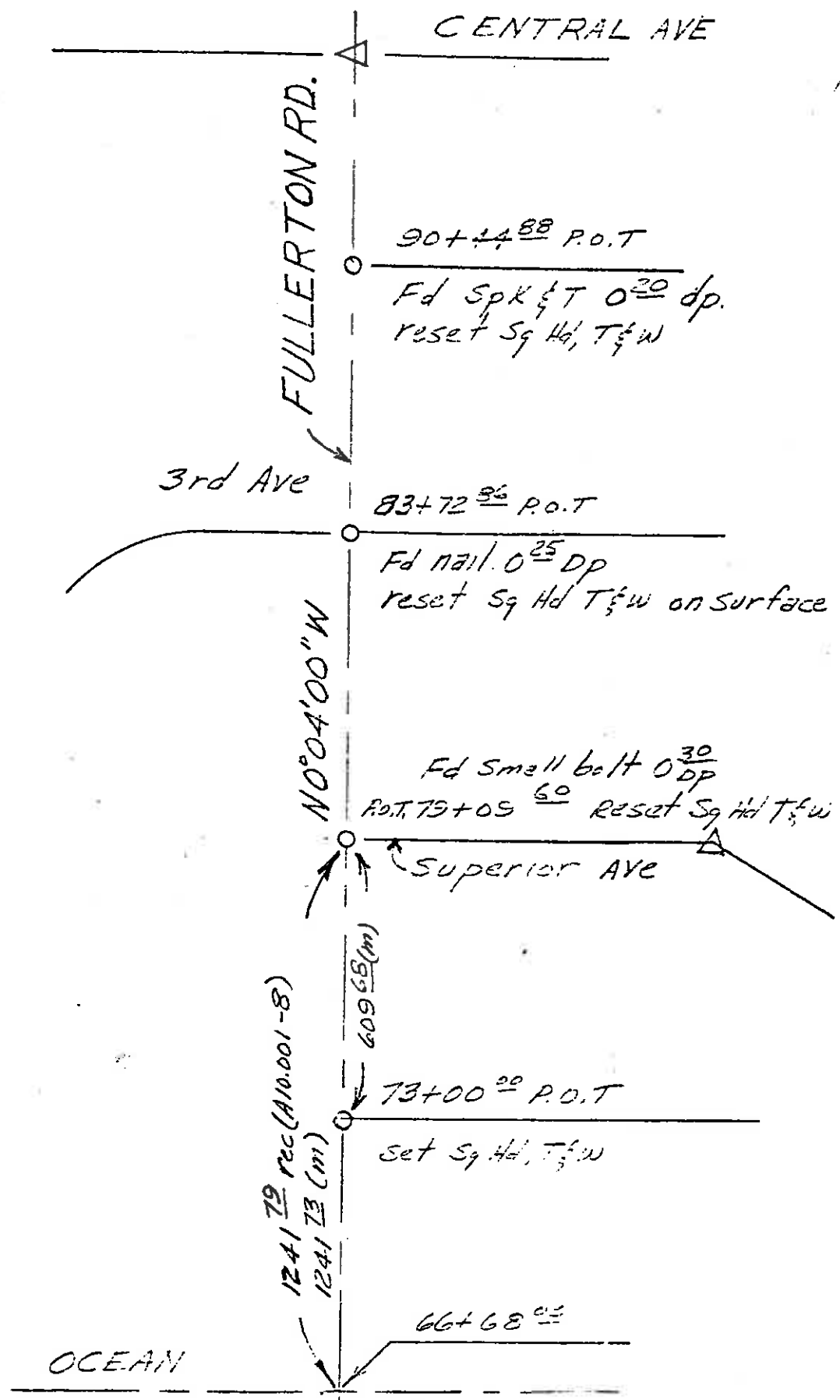
Fd Sg Spk 0<sup>30</sup> DP  
 reset Sg Hd T & W on surface

Fd belt in 2" I.P.  
 0<sup>40</sup> DP  
 reset Sg Hd, T & W

89° 00' 38"

06110 MSJ77, 2/1/67

See pg. 5



FULLERTON RD.

CENTRAL AVE

90+44.88 P.O.T

Fd Spk 1/2 T 0.20 dp.  
reset Sq Hd, T 1/2 W

3rd Ave

83+72.86 P.O.T

Fd nail. 0.25 DP  
reset Sq Hd T 1/2 W on surface

N0°04'00" W

Fd Small bolt 0.30 DP  
P.O.T. 73+09.60 Reset Sq Hd T 1/2 W

Superior Ave

609.68 (m)

73+00.00 P.O.T

set Sq Hd, T 1/2 W

1241 79 rec (A10.001-8)  
1241 13 (m)

66+68.00

OCEAN

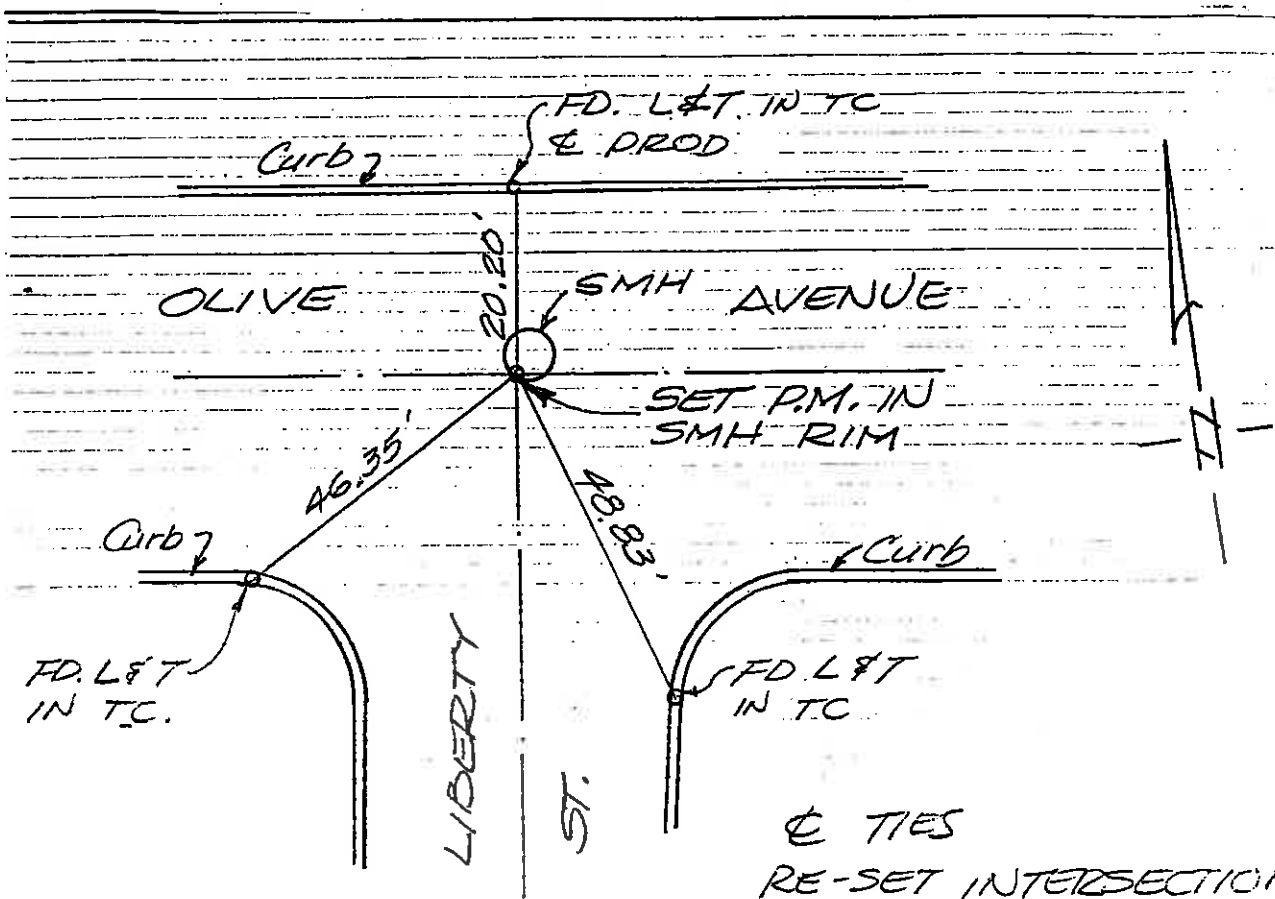
See pg. 5

VII

4/60

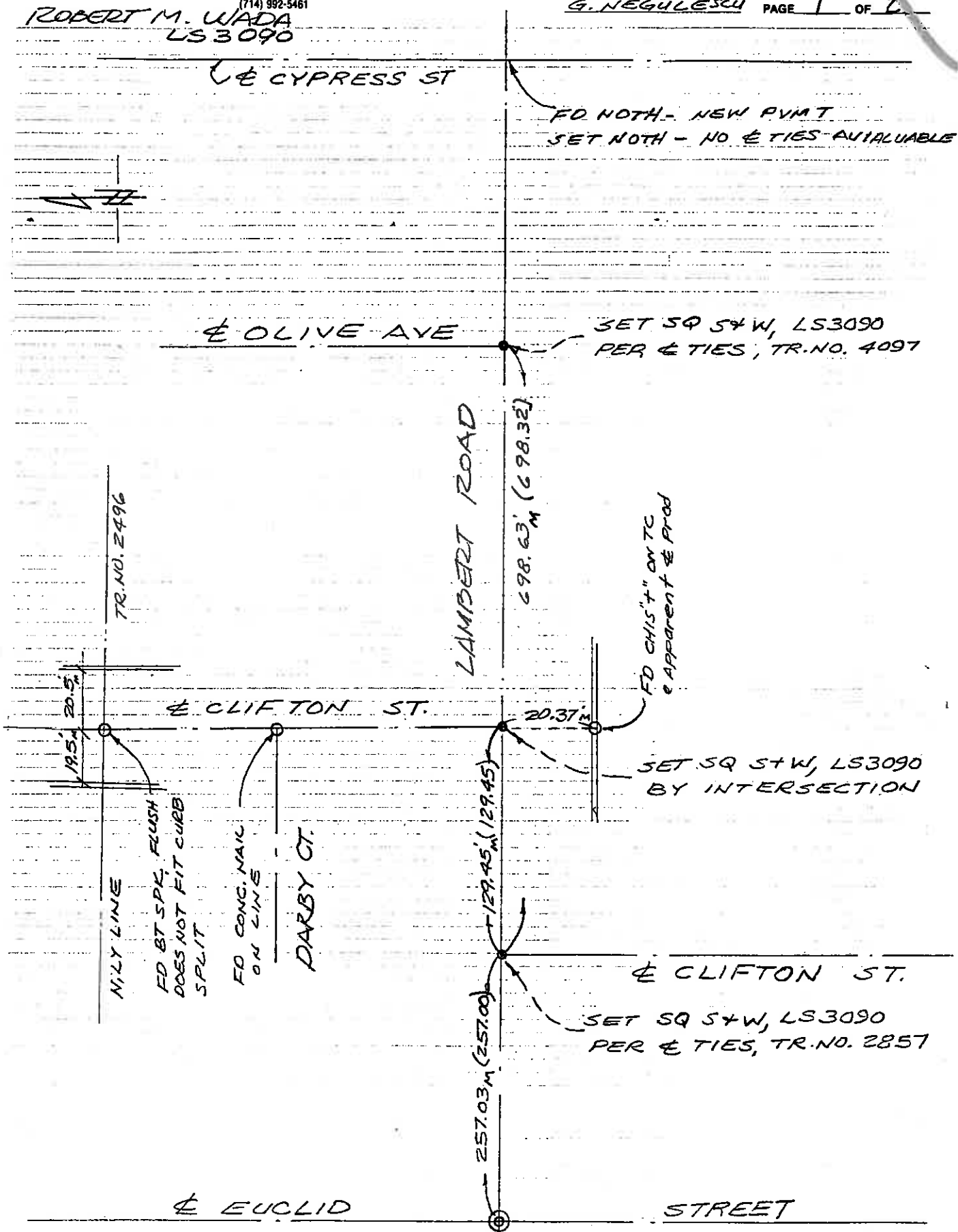
Removal of Pkwy

(5)



& TIES  
RE-SET INTERSECTION  
 OLIVE AVE. & LIBERTY ST.  
 CITY OF LA HABRA

ROBERT M. WADA  
LS 3090



& TIES - RE-SET INTERSECTIONS  
 OLIVE AVE & LAMBERT RD.  
 CLIFTON ST & LAMBERT RD - 2 INTERSECTIONS  
 CITY OF LA HABRA

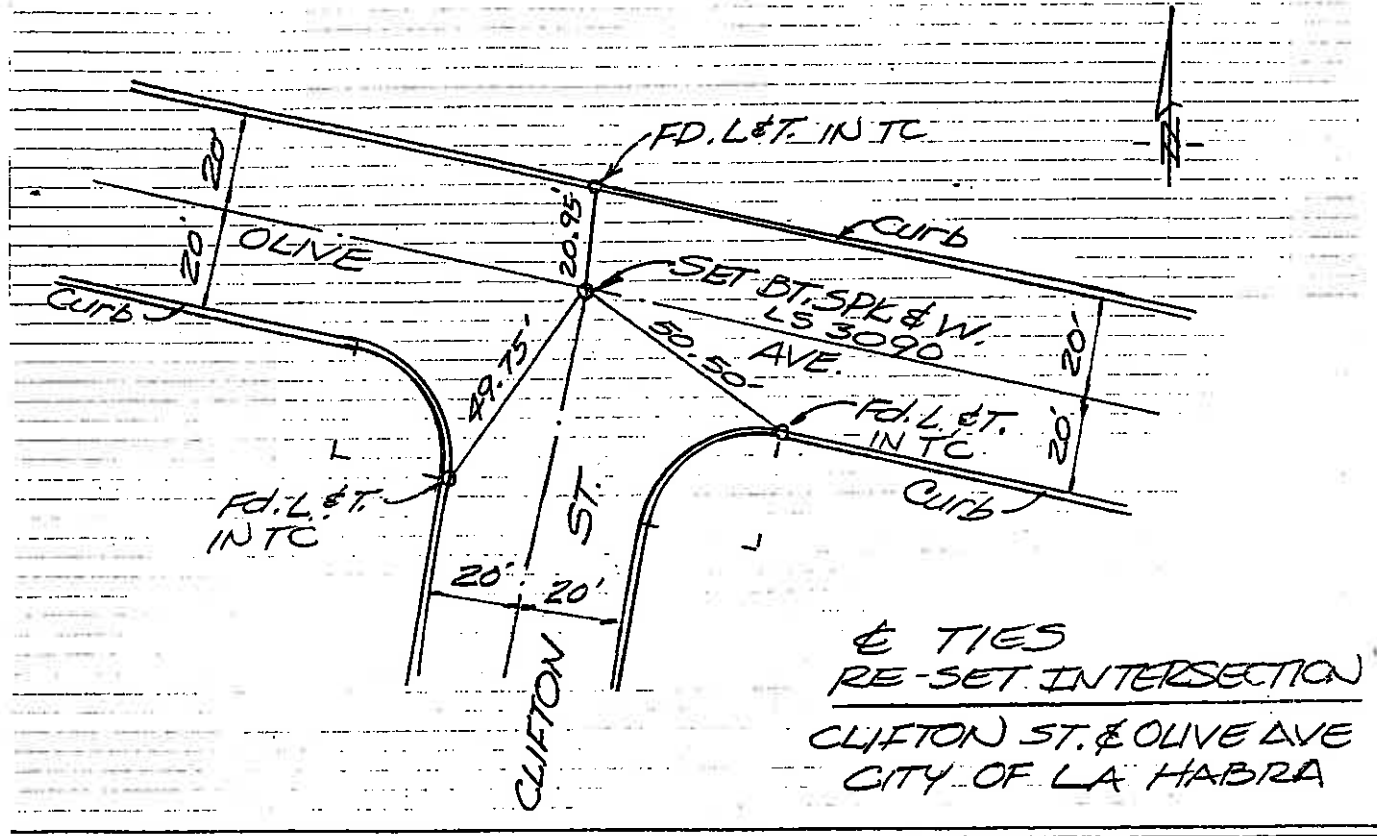
**ROBERT WADA & ASSOCIATES**

699 SO. STATE COLLEGE BLVD., SUITE E, FULLERTON, CA 92631  
(714) 992-5461

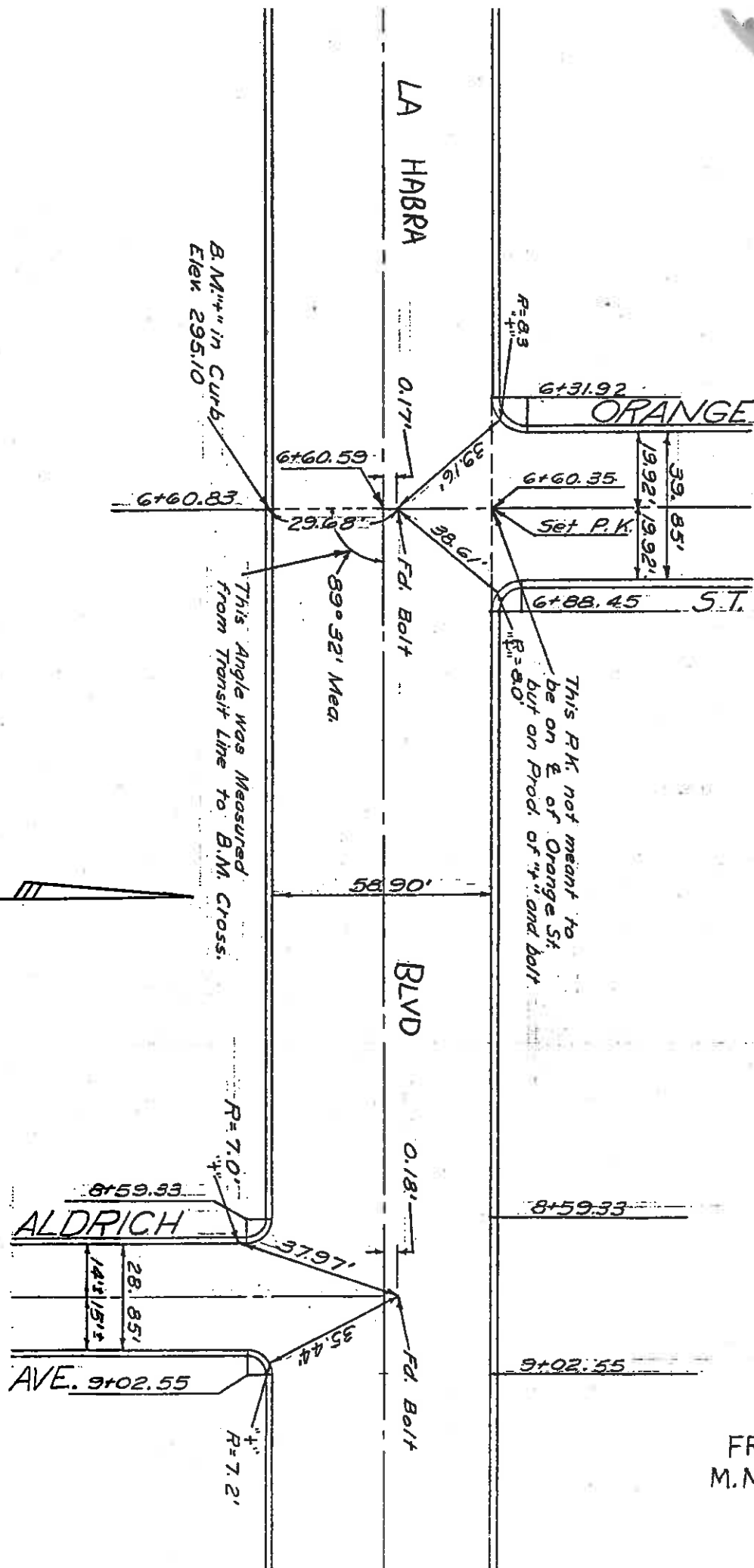
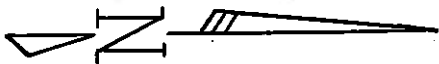
CREW T. SUZUKI  
G. NEWTON  
G. NECHULESCU

JOB. NO. 1715  
DATE 3-31-88  
PAGE 2 OF 2

ROBERT M. WADA  
LS 3090



IDENTICAL



FROM  
M.M-E-3

NO  
T.



ORA 72 7.5/11.4  
35143M

WHITTIER BLVD TIES PRIOR TO  
RESURFACING

4.21.78  
WINTER PW

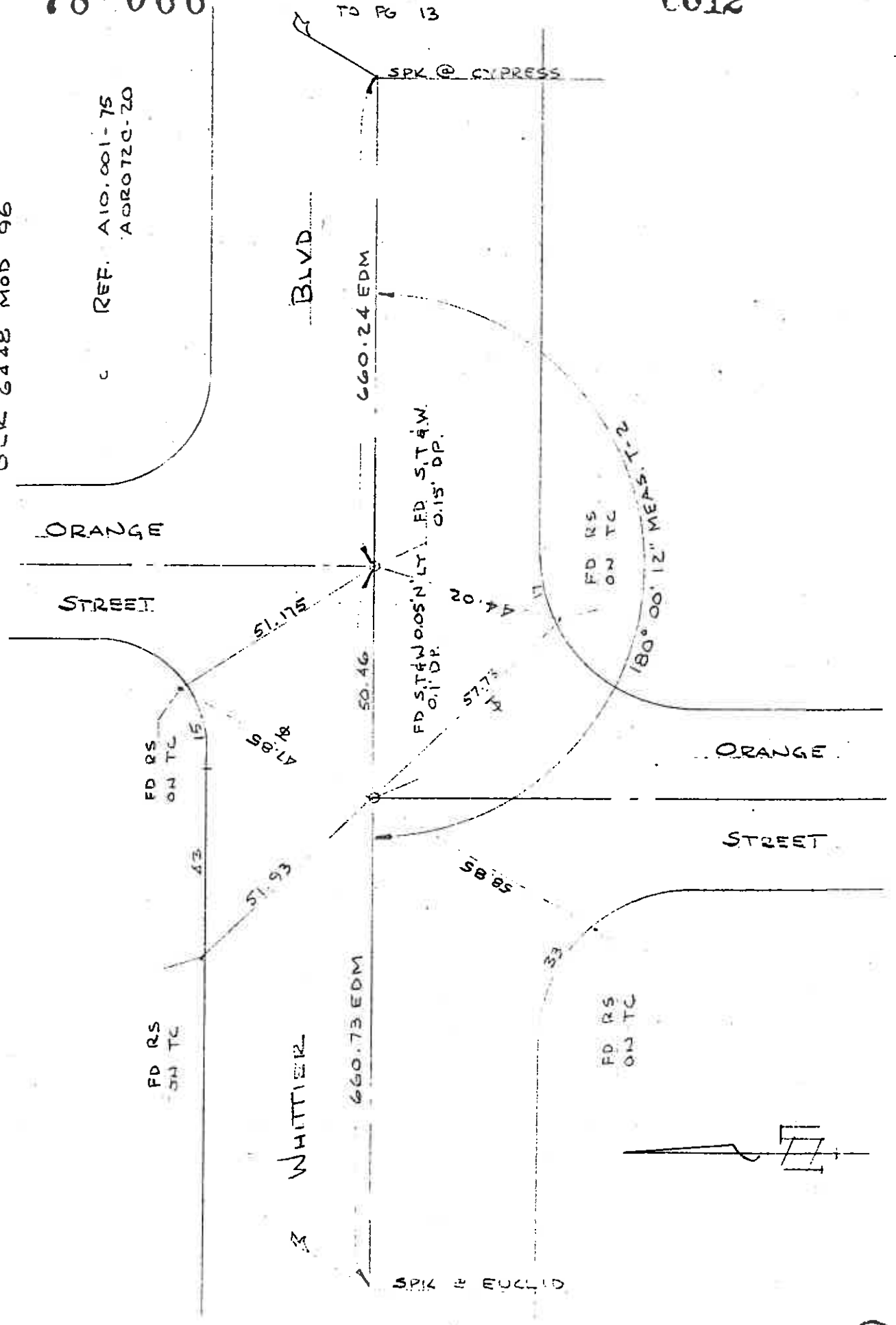
12 36

BLK 6448 MOD 96

REF. A10.001-75  
A090720-20

78-066

C012



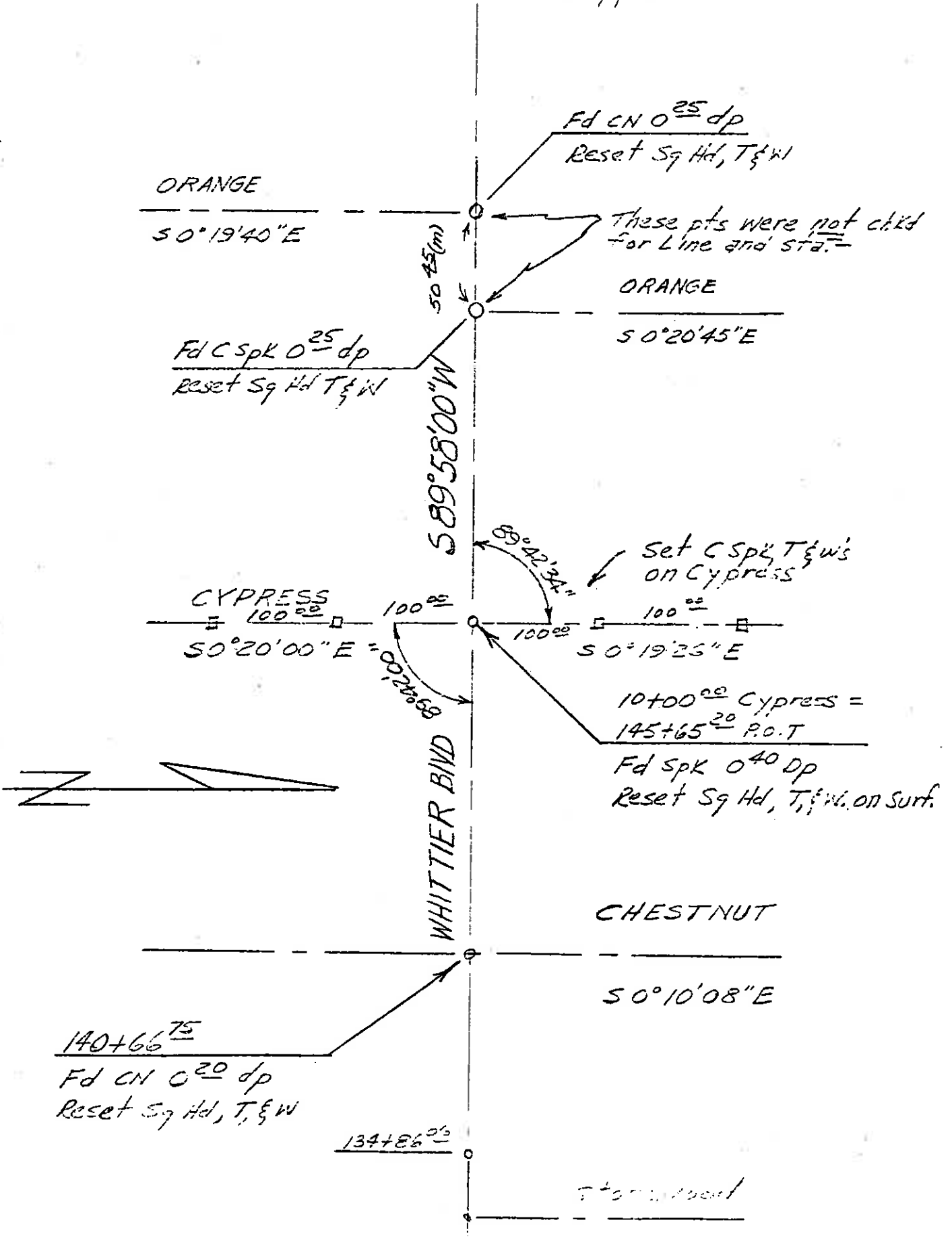
TO PG 11

TO PG 13

(2)

see pg 9

136446 M 96, 97, 98



111

4/60

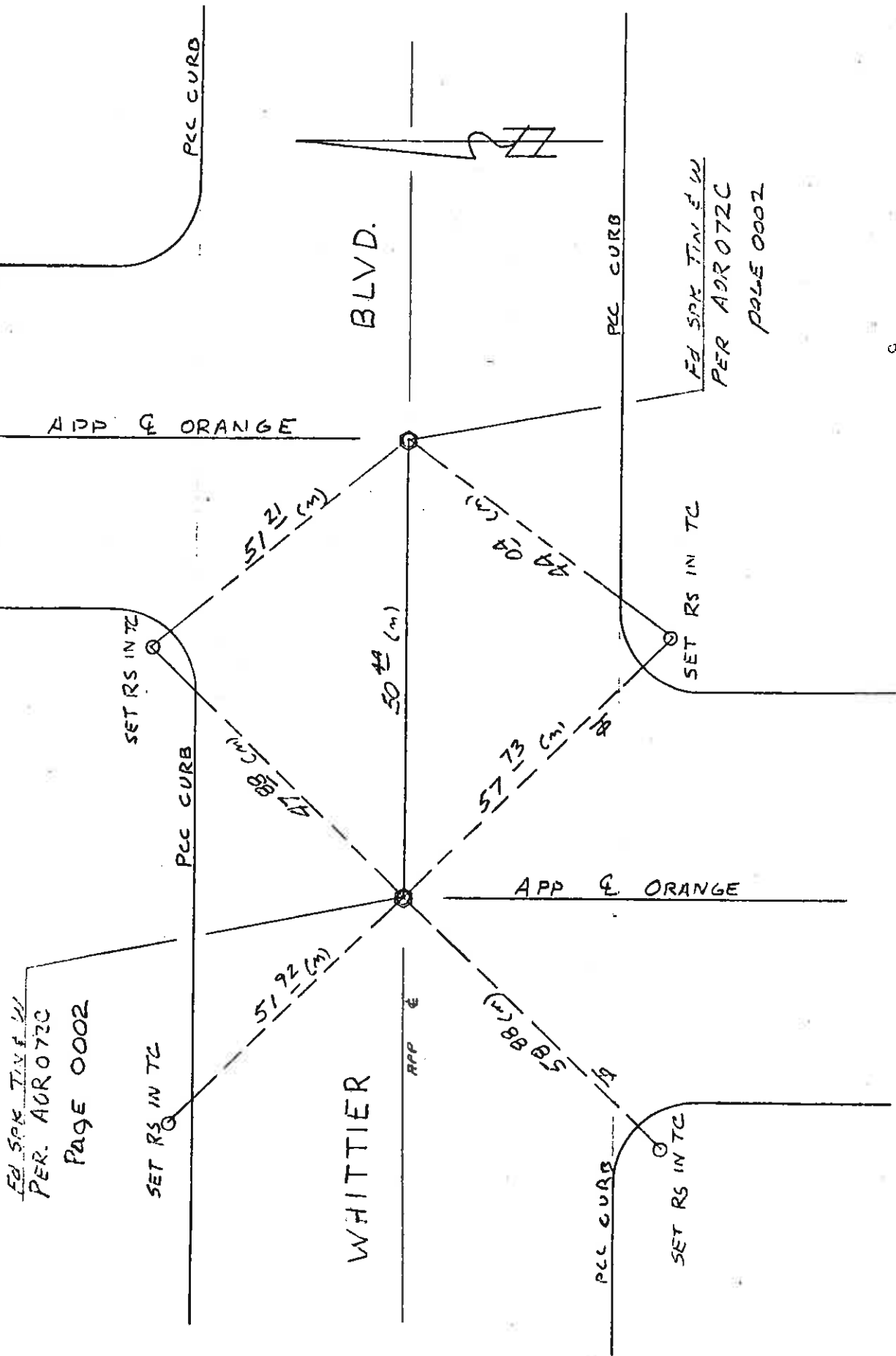
Kusner & Fry

(F)

6/22/70  
R. Adams & Pty  
J. Waldroff

TIES @ WHITTIER  
BLVD @ ORANGE

ORA 72 7.2/11.9  
07212-260231  
SUB. REAR 70-217



FD SPK TIE IN W  
PER. AOR 0720  
PAGE 0002

FD SPK TIE IN W  
PER AOR 0720  
PAGE 0002